

Rules and manners in National Parks

# Welcome to the National Park

—You are in a National Park—



## What is a National Park?

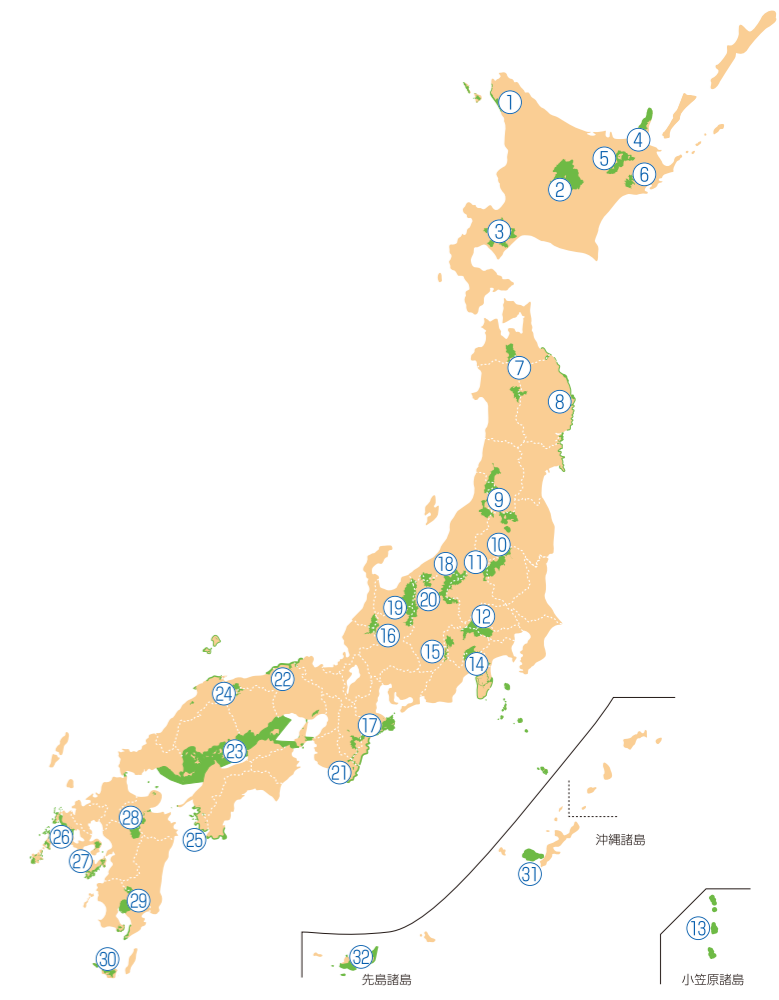
The National Parks are designated by the national government based on the National Park Act as a great representative of the natural scenic sites in Japan. From Hokkaido in the north to Okinawa and Ogasawara islands in the south, there are 32 designated National Parks and a total of more than 300 Million people visit each year.

The National Parks in Japan include diverse environments of forests, farming lands and villages as well as unspoiled nature. On the other hand, the parks are full of attractions and offer visitors an opportunity to experience with the history and culture of the region fostered by nature and people's lives there. Please enjoy the beautiful nature in Japan that show quite different scenic beauty in four different seasons.

## List of contact information

<b>①Rishiri-Rebun-Sarobetsu, ②Daisetsuzan, ③Shikotsu-Toya</b>		
Hokkaido Regional Environment Office	TEL : 011-299-1950	E-mail : REO-HOKKAIDO@env.go.jp
<b>④Shiretoko, ⑤Akan, ⑥Kushiroshitsugen</b>		
Kushiro Nature Conservation Office	TEL : 0154-32-7500	E-mail : NCO-KUSHIRO@env.go.jp
<b>⑦Towada-Hachimantai, ⑧Sanriku Fukko (reconstruction), ⑨Bandai-Asahi</b>		
Tohoku Regional Environment Office	TEL : 022-722-2870	E-mail : REO-TOHOKU@env.go.jp
<b>⑩Nikko, ⑪Oze, ⑫Chichibu-Tama-Kai, ⑬Ogasawara, ⑭Fuji-Hakone-Izu, ⑮Minami Alps</b>		
Kanto Regional Environment Office	TEL : 048-600-0816	E-mail : REO-KANTO@env.go.jp
<b>⑯Hakusan, ⑰Ise-Shima</b>		
Chubu Regional Environment Office	TEL : 052-955-2130	E-mail : REO-CHUBU@env.go.jp
<b>⑱Joshin'etsukogen, ⑲Chubusangaku, ⑳Myoko-Togakushi renzan</b>		
Nagano Nature Conservation Office	TEL : 026-231-6570	E-mail : NCO-NAGANO@env.go.jp
<b>㉑Yoshino-Kumano, ㉒San'inikaigan, ㉓Setonaikai</b>		
Kinki Regional Environment Office	TEL : 06-4792-0700	E-mail : REO-KINKI@env.go.jp
<b>㉔Setonaikai, ㉕Daisen-Oki, ㉖Ashizuri-Uwakai</b>		
Chugoku-Shikoku Regional Environment Office	TEL : 086-223-1577	E-mail : REO-CHUSHIKOKU@env.go.jp
<b>㉗Setonaikai, ㉘Saikai, ㉙Unzen-Amakusa, ㉚Aso-Kuju, ㉛Kirishima-Kinkowan, ㉜Yakushima</b>		
Kyushu Regional Environment Office	TEL : 096-322-2400	E-mail : REO-KYUSHU@env.go.jp
<b>㉝Keramashoto, ㉞Iriomote-Ishigaki</b>		
Naha Nature Conservation Office	TEL : 098-858-5824	E-mail : NCO-NAHA@env.go.jp

Some areas in the parks are under control of the local rules. For detail, Visit the National Park website, or contact the office in charge by phone (Japanese language only) or email (English available).



### Visitor Use Promotion Office National Park Division Nature Conservation Bureau Ministry of the Environment

Godochosha No. 5, Kasumigaseki 1-2-2, Chiyoda-ku, Tokyo 100-8975, Japan. TEL : 03-3581-3351

The latest information about National Parks is provided on the following websites.

Ministry of the Environment :  
<http://www.env.go.jp/>



National Parks :  
<http://www.env.go.jp/park/>



This brochure is printed in an environmentally-friendly way, using FSC-certified paper made from properly managed forest resources and rice ink with consideration for local production and local consumption, as well as food mileage.

# Rules and Manners in National Parks

**Rule:** Please observe the rules. Some areas in the parks are under strict control of the relevant laws and regulations.



**Do not hunt animals and plants, and do not take stones home with you.** This will cause an imbalance in the ecosystems, and other visitors after you will not be able to enjoy the nature.



**Do not camp out or make bonfire in the designated area that will cause vegetation destruction, disturb wild animals and cause wild fires.**



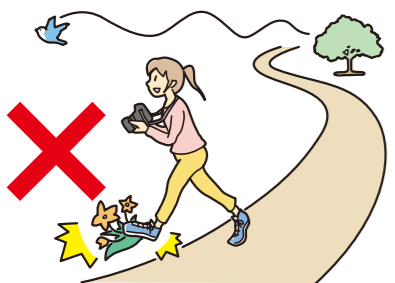
**Keep the facilities clean for other visitors. Graffiti is a crime in Japan (constituting the crime of property destruction).**

**Manners:** Please be considerate of the nature and the others so that every visitor can enjoy a pleasant time in the National Park.



### Set up a reasonable tour plan.

When visiting a National Park, carry out your plan on your own responsibility after gathering information in advance and forming an appropriate tour plan. For mountain climbing, avoid accidents by getting information about the climate, access, condition of mountain paths, and volcanoes in advance.



### Keep walking on the boardwalk and walking path.

This will keep you on track, as well as prevent the natural environment from being damaged by the trampled plants or the scrapped soil. Please use protection cap for trekking stick to prevent mountain path erosion.



### Do not feed wild animals.

Changes in behavioral patterns may lead to an imbalance in the ecosystems. In addition, traffic accidents, injuries, and other problems may arise with wild animals that normally live in nature becoming used to human beings and getting closer to human habitations.

\*If you encounter a wild bear or boar, move away quietly without disturbing them.



### Drive safely.

Collision between your car and wild animal will cause physical injuries, also endanger the lives of wild animals. Please check on information in advance about traffic restrictions in the areas designed for the preservation of vegetation and ecosystems.



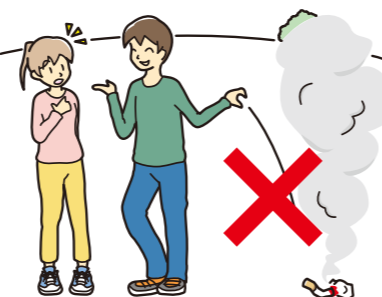
### Keep an eye on your pet.

Pet can be a great threats to wild animals. Please keep an eye on your pet for its safety as well.



### Take all garbage home.

This helps preserve the landscape and scenery of the National Park, as well as prevent wild animals from being attracted by garbage odors.



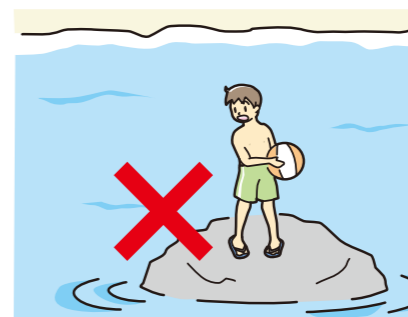
### Smoke in designated areas only.

Smoking while walking disturbs others. Please take ashes and butts with you as they can also cause fires.



### Check on restrooms in advance.

Use the restroom in advance or use a portable toilet as there are places with no restrooms. This helps prevent water and soil contamination from bodily waste.



### When visiting a coastal National Park, check on water safety information about the times of high and low tides, tidal level, tidal current, etc., in advance.

To prevent accidents involving rapid rip currents or becoming stuck on rocky shores at high tide, gather information in advance before exploring the sea shore, reefs, tidal flats, mangrove forests, etc.



### Be careful not to break coral with fins.

Please be careful not to damage valuable coral with fins when snorkeling or diving.



### Be considerate of the local community.

In National Parks, there are also places where people live. Please be considerate of the local community by avoiding interruptions to farming, forestry, and fishery operations, trespassing on private property, or making noise.